

### Annotation

*Lambertella himalayensis* V.P. Tewari & D.C. Pant, Mycologia 59(1): 117 (1967)

Family: *Leotiomyces*, *Rutstroemiaceae*.

**The morphology is as follows:** *Saprobic* on a dead twigs of *Quercus leucotriphora*.

**Sexual morph:** Stipitate discomycetous. Apothecia up to 2 mm width, arising singly and scattered. Stipe  $977 \times 210 \mu\text{m}$  Receptacle cupulate to discoid. Disc saucer shape to applanate. Hairs absent. Ectal excipulum  $23\text{--}32 \mu\text{m}$  wide ( $\bar{x} = 27.2 \mu\text{m}$ ,  $n = 15$ ), composed thin wall, hyaline light brown cells of *textura porrecta*. Medullary excipulum  $28\text{--}38 \mu\text{m}$  wide ( $\bar{x} = 31.6 \mu\text{m}$ ,  $n = 10$ ), composed of hyaline cells of *textura intricata*. Hymenium light to dark brown. Paraphyses can not be observed but based on the literature: hyaline and septate. Asci cannot be observed but based on the literature: cylindrical, 4 to 5-spored, J+, Ascospores  $11\text{--}16 \times 5\text{--}7 \mu\text{m}$  ( $\bar{x} = 13.3 \times 6.5 \mu\text{m}$ ,  $n = 10$ ), uniseriate, ellipsoid, aseptate, brown. **Asexual morph:** Undetermined.

**Material examined:** INDIA, Ayarpata, near Bisht Bhawan, Nainital. on a dead twigs of *Quercus leucotriphora* and two other unidentified herbaceous stems. 29 August 1965, D.C. Pant (CUP-050013).



School of Science, Mae Fah Luang University, 333 M. 1, Tasud, Muang, Chiang Rai 57100, Thailand.

Anis S. Lestari (PhD Student)

10<sup>th</sup> December 2022

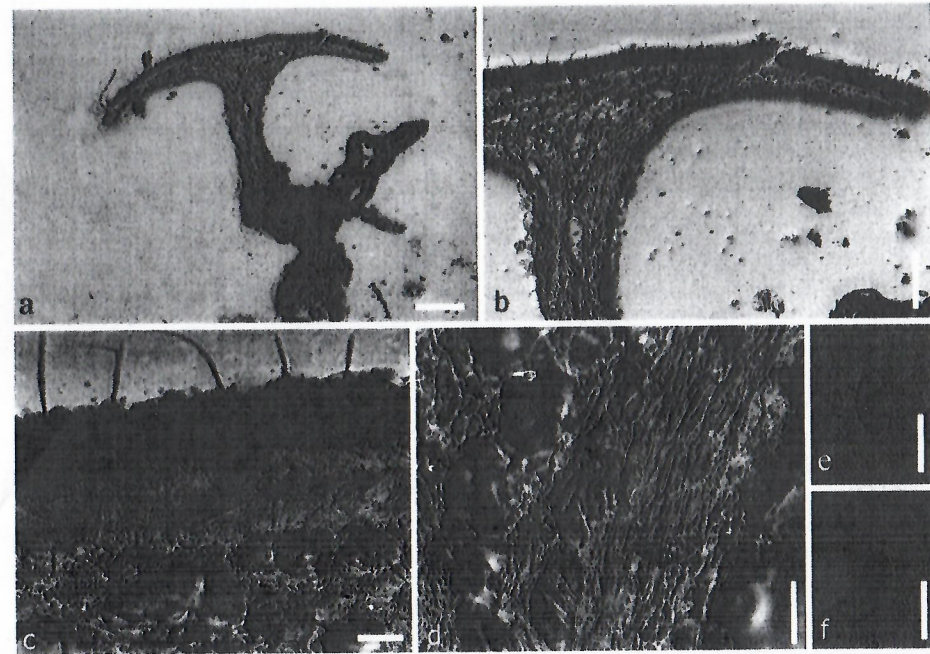


Fig. 1. *Lambertella himalayensis* (CUP-050013, isotype) a–b. An apothecium section. c. A close up of hymenium d. Ectal excipular cells e–f. Ascospores. Scale bars: a = 330  $\mu\text{m}$ , b = 170  $\mu\text{m}$ , c–d = 35  $\mu\text{m}$ , e–f = 16  $\mu\text{m}$